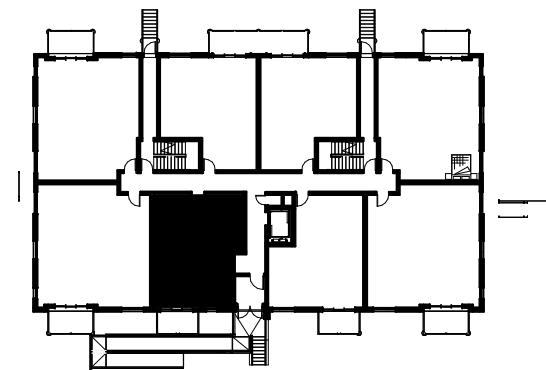


Plan clé
Keyplan



Numéro d'appartements
Apartment Numbers

101

Superficie Totale
Total Area 69.9 m² / 752 ft²

Unité
Unit 63.6 m² / 685 ft²

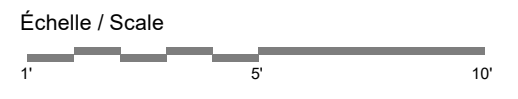
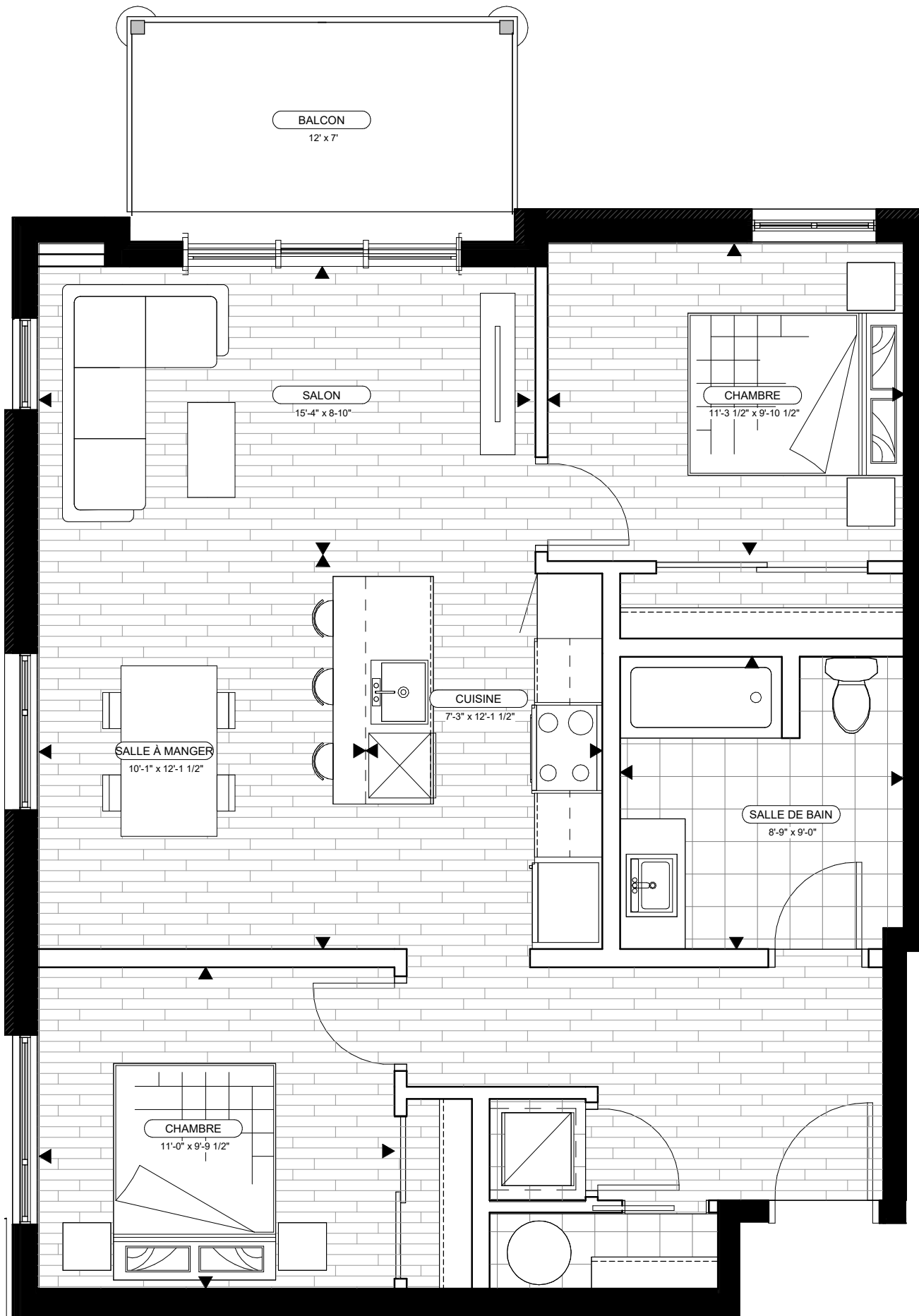
Balcon
Balcony 6.2 m² / 67 ft²

NANCY-ELLIOTT - BÂTIMENT A
115 rue Nancy-Elliott
Gatineau, Québec J9J

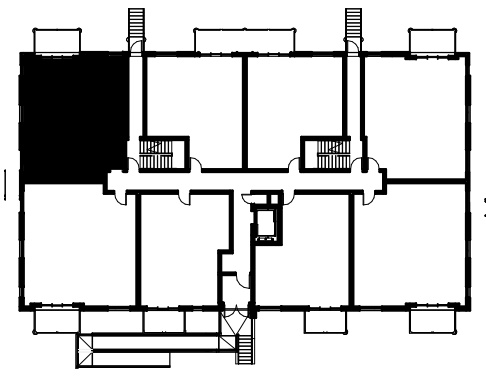


Type et modèle
Type and model

A2
1 CHAMBRE



Plan clé
Keyplan



Numéro d'appartements
Apartment Numbers

103

Superficie Totale
Total Area 84.9 m² / 914 ft²

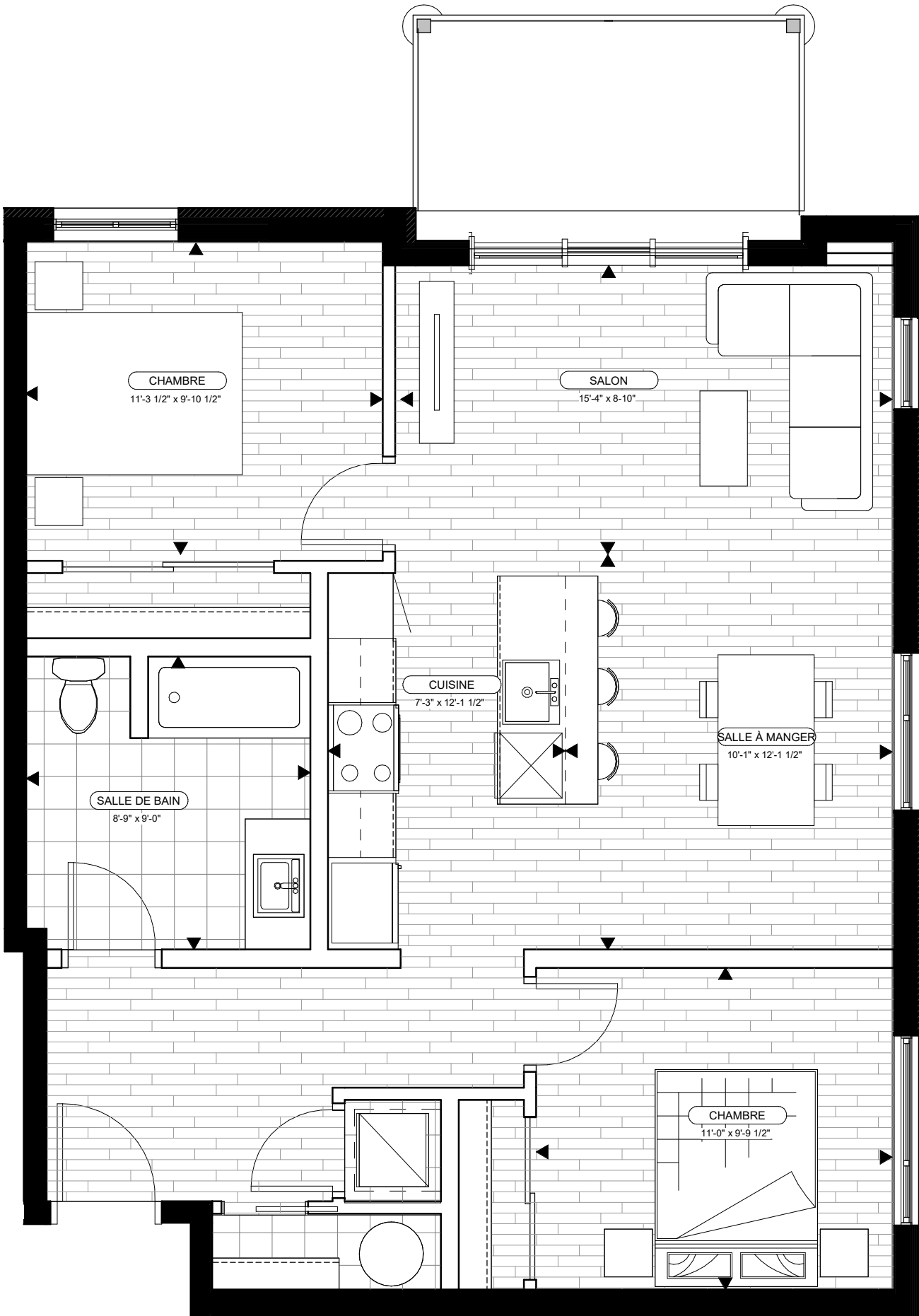
Unité
Unit 76.8 m² / 827 ft²

Balcon
Balcony 8.1 m² / 87 ft²

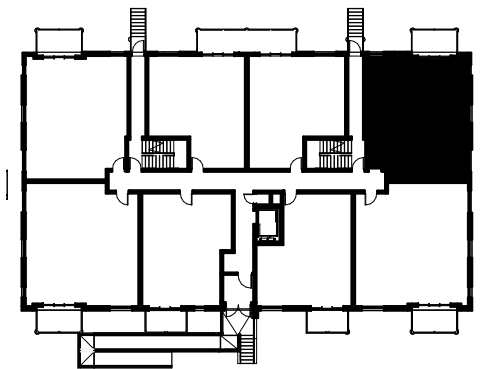
NANCY-ELLIOTT - BÂTIMENT A
115 rue Nancy-Elliott
Gatineau, Québec J9J



Type et modèle
Type and model **B2**
2 CHAMBRES



Plan clé
Keyplan



Numéro d'appartements
Apartment Numbers

106

Superficie Totale

Total Area 84.9 m² / 914 ft²

Unité

Unit 76.8 m² / 827 ft²

Balcon

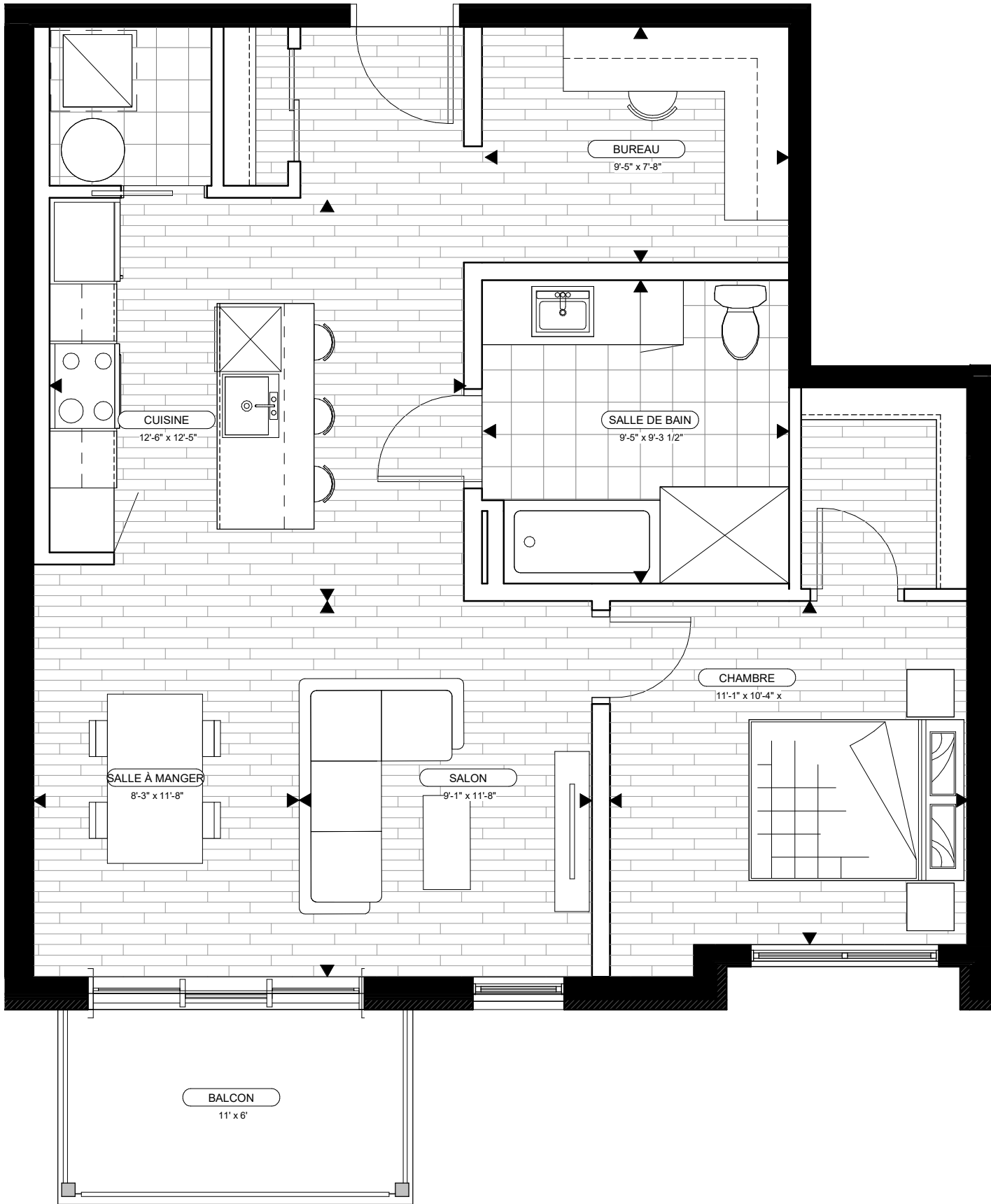
Balcony 8.1 m² / 87 ft²

Type et modèle
Type and model

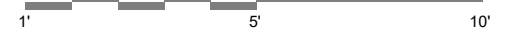
B2-R
2 CHAMBRES

NANCY-ELLIOTT - BÂTIMENT A
115 rue Nancy-Elliott
Gatineau, Québec J9J

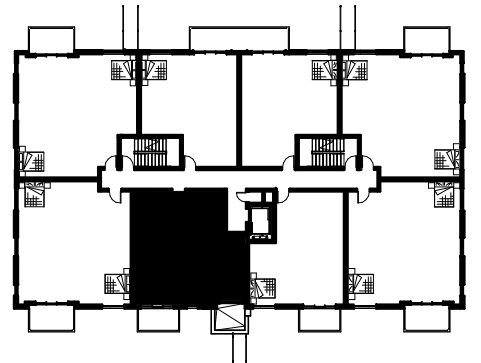




Échelle / Scale



Plan clé
Keyplan



Numéro d'appartements

Apartment Numbers

201-301-401

Superficie Totale

Total Area 83.8 m² / 902 ft²

Unité

Unit 77.6 m² / 835 ft²

Balcon

Balcony 6.2 m² / 67 ft²

NANCY-ELLIOTT - BÂTIMENT A

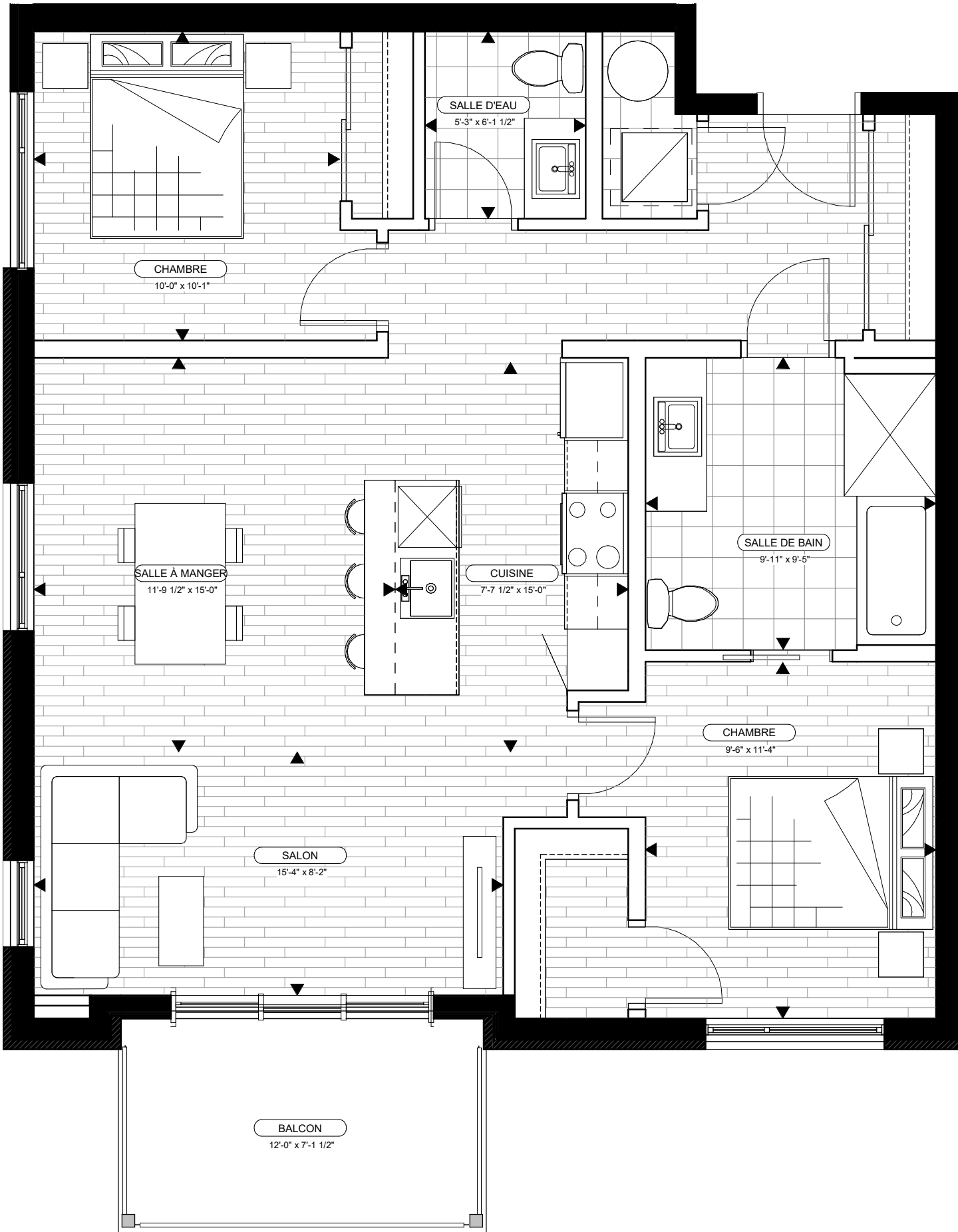
115 rue Nancy-Elliott
Gatineau, Québec J9J

ROSSMANN
ARCHITECTURE

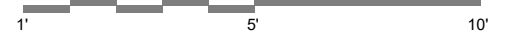
Type et modèle
Type and model

A4

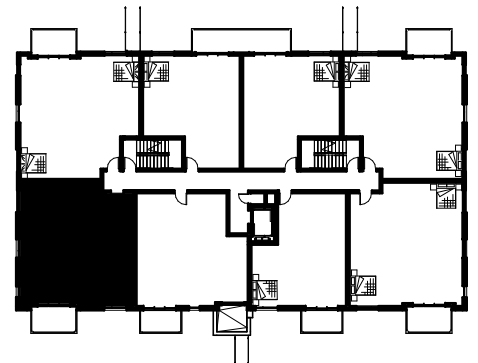
1 CHAMBRE + BUR.



Échelle / Scale



Plan clé
Keyplan



Numéro d'appartements

Apartment Numbers

102-202-302-402

Superficie Totale

Total Area 93.1 m² / 1,002 ft²

Unité

Unit 85.0 m² / 915 ft²

Balcon

Balcony 8.1 m² / 87 ft²

NANCY-ELLIOTT - BÂTIMENT A

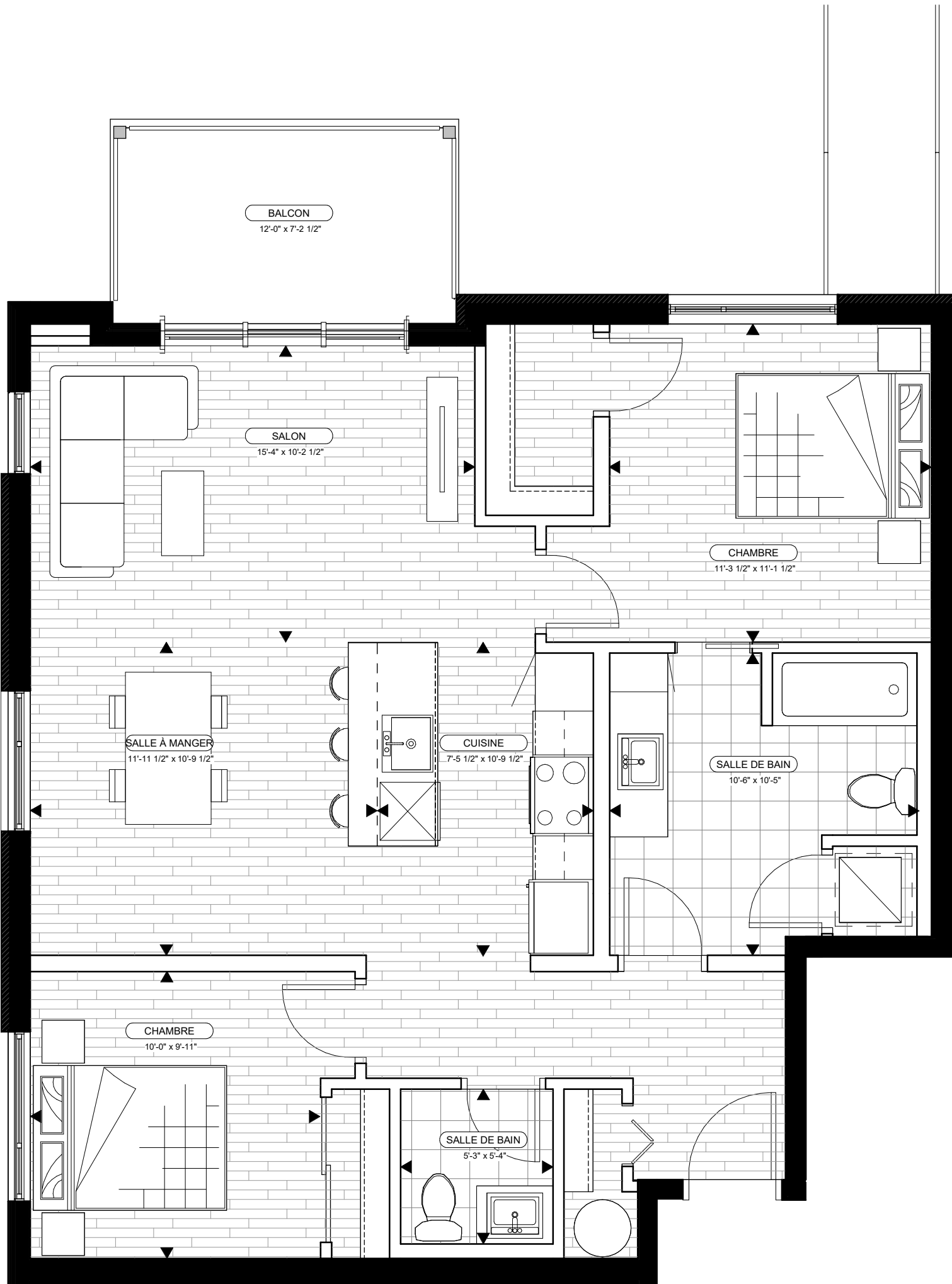
115 rue Nancy-Elliott
Gatineau, Québec J9J

ROSSMANN
ARCHITECTURE

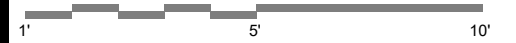
Type et modèle
Type and model

B1

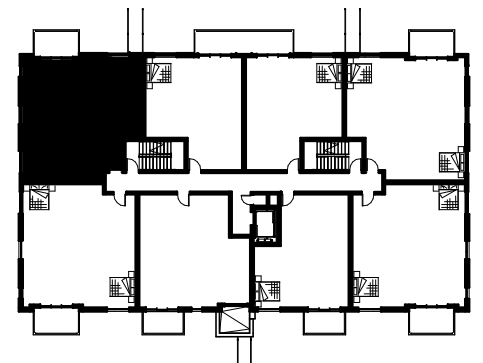
2 CHAMBRES



Échelle / Scale



Plan clé
Keyplan



Numéro d'appartements

Apartment Numbers

203-303-403

Superficie Totale

Total Area 101.1 m² / 1,088 ft²

Unité

Unit 92.9 m² / 1,000 ft²

Balcon

Balcony 8.2 m² / 88 ft²

NANCY-ELLIOTT - BÂTIMENT A

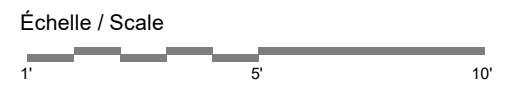
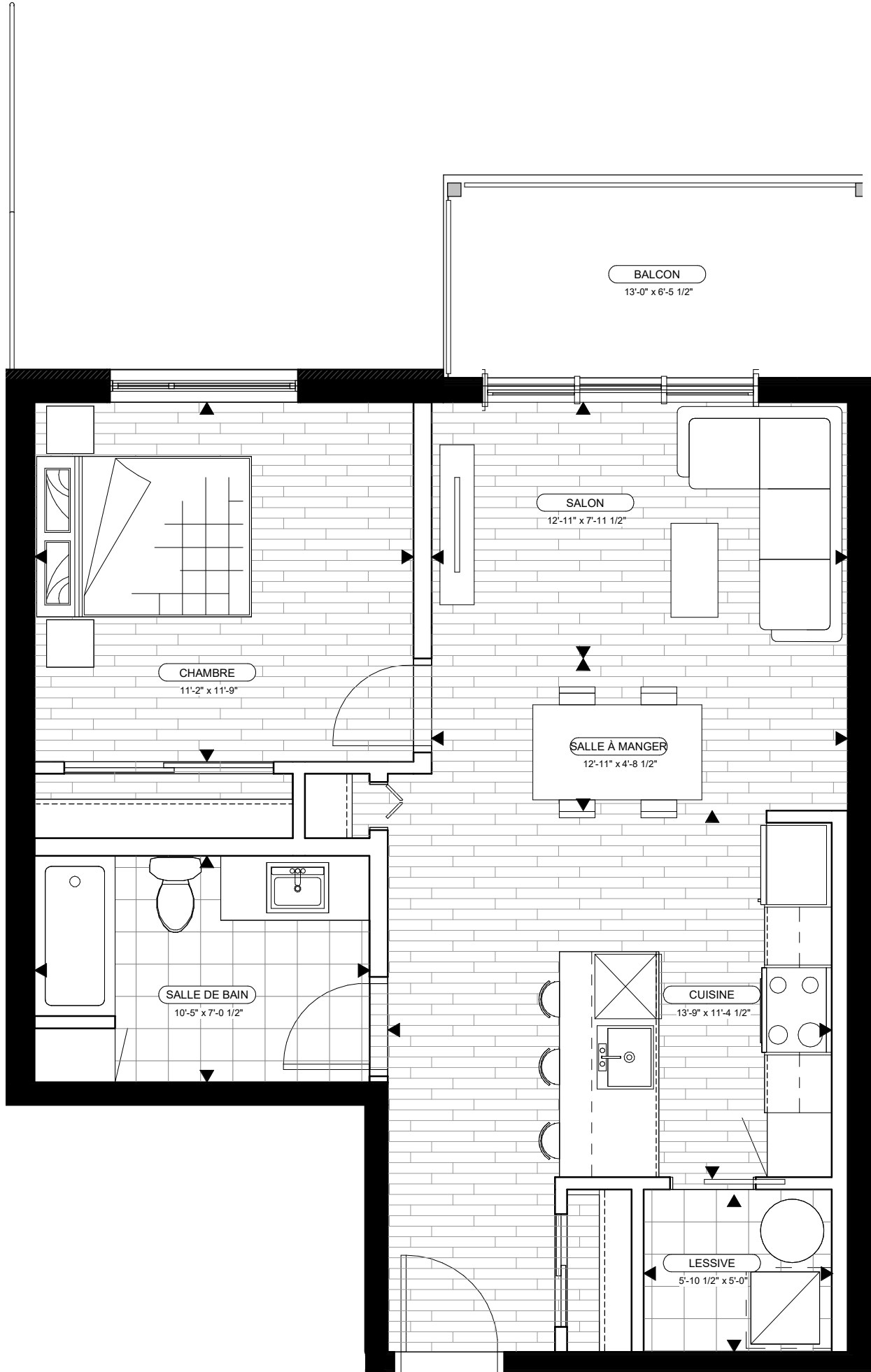
115 rue Nancy-Elliott
Gatineau, Québec J9J



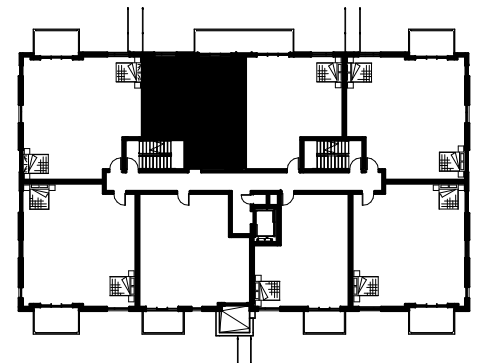
Type et modèle
Type and model

B3

2 CHAMBRES



Plan clé
Keyplan



Numéro d'appartements
Apartment Numbers
104-204-304-404

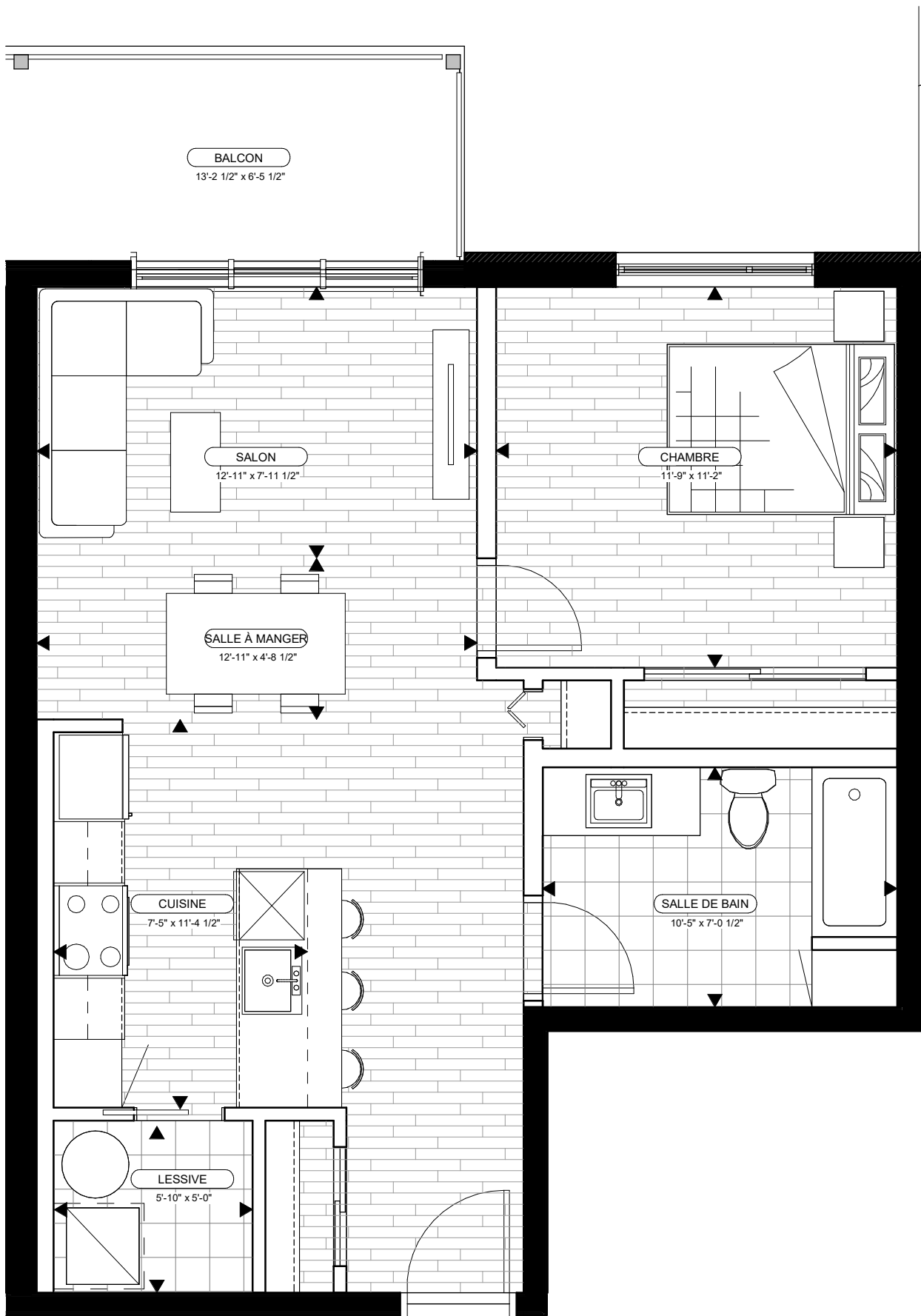
Superficie Totale Total Area	72.7 m ² /	783 ft ²
Unité Unit	65.2 m ² /	702 ft ²
Balcon Balcony	7.5 m ² /	81 ft ²

NANCY-ELLIOTT - BÂTIMENT A
115 rue Nancy-Elliott
Gatineau, Québec J9J

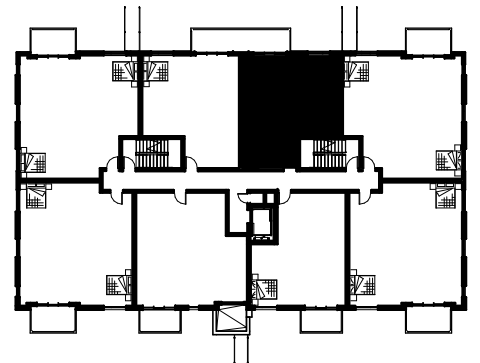


Type et modèle
Type and model

A3
1 CHAMBRES



Plan clé
Keyplan



Numéro d'appartements
Apartment Numbers

105-205-305-405

Superficie Totale

Total Area 72.7 m² / 783 ft²

Unité

Unit 65.2 m² / 702 ft²

Balcon

Balcony 7.5 m² / 81 ft²

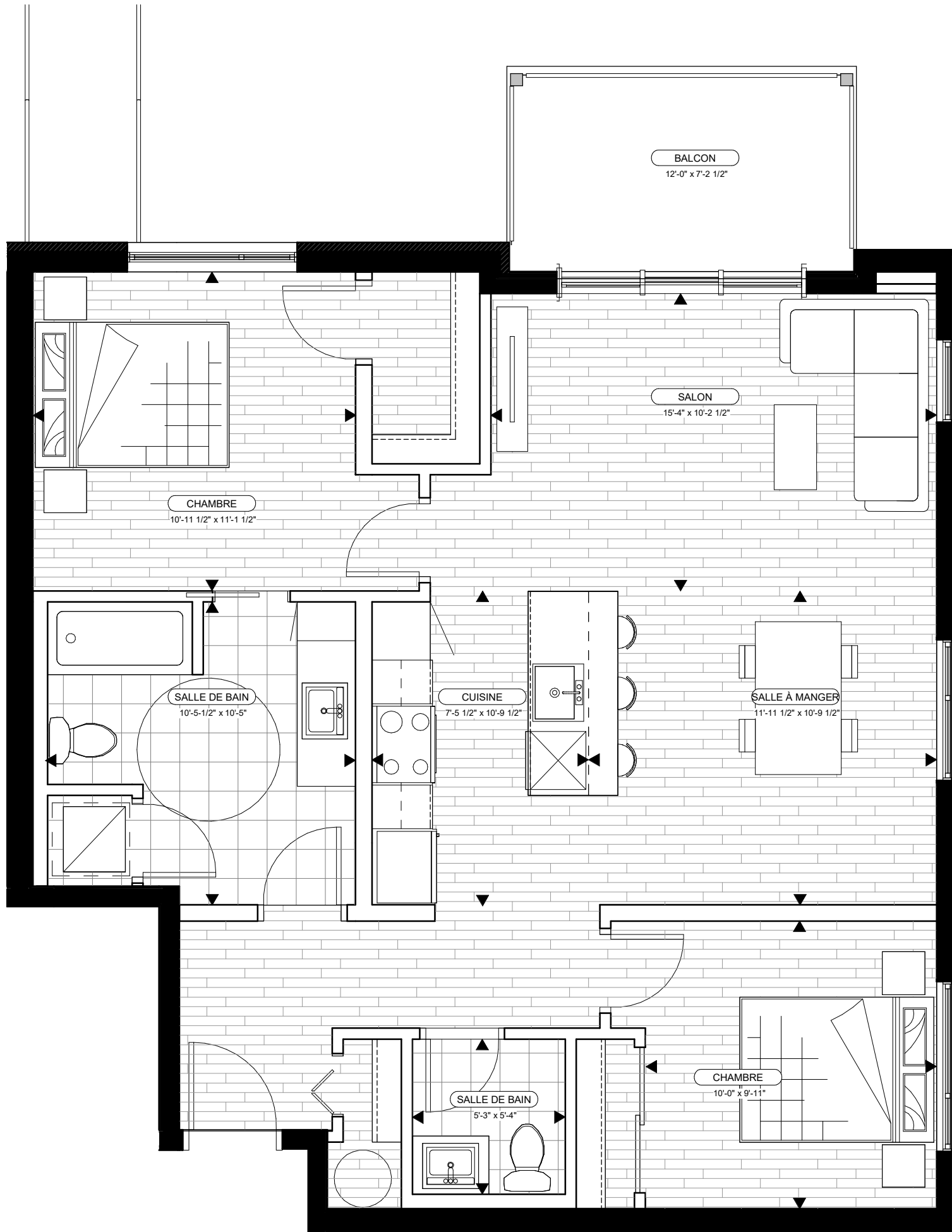
Type et modèle
Type and model

A3-R

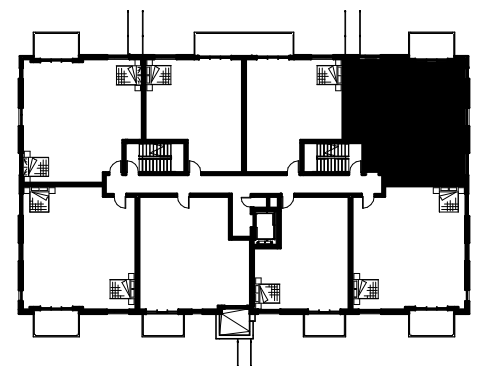
1 CHAMBRE

NANCY-ELLIOTT - BÂTIMENT A
115 rue Nancy-Elliott
Gatineau, Québec J9J





Plan clé
Keyplan



Numéro d'appartements

Apartment Numbers

106-206-306-406

Superficie Totale

Total Area 101.2 m² / 1,089 ft²

Unité

Unit 93.0 m² / 1,001 ft²

Balcon

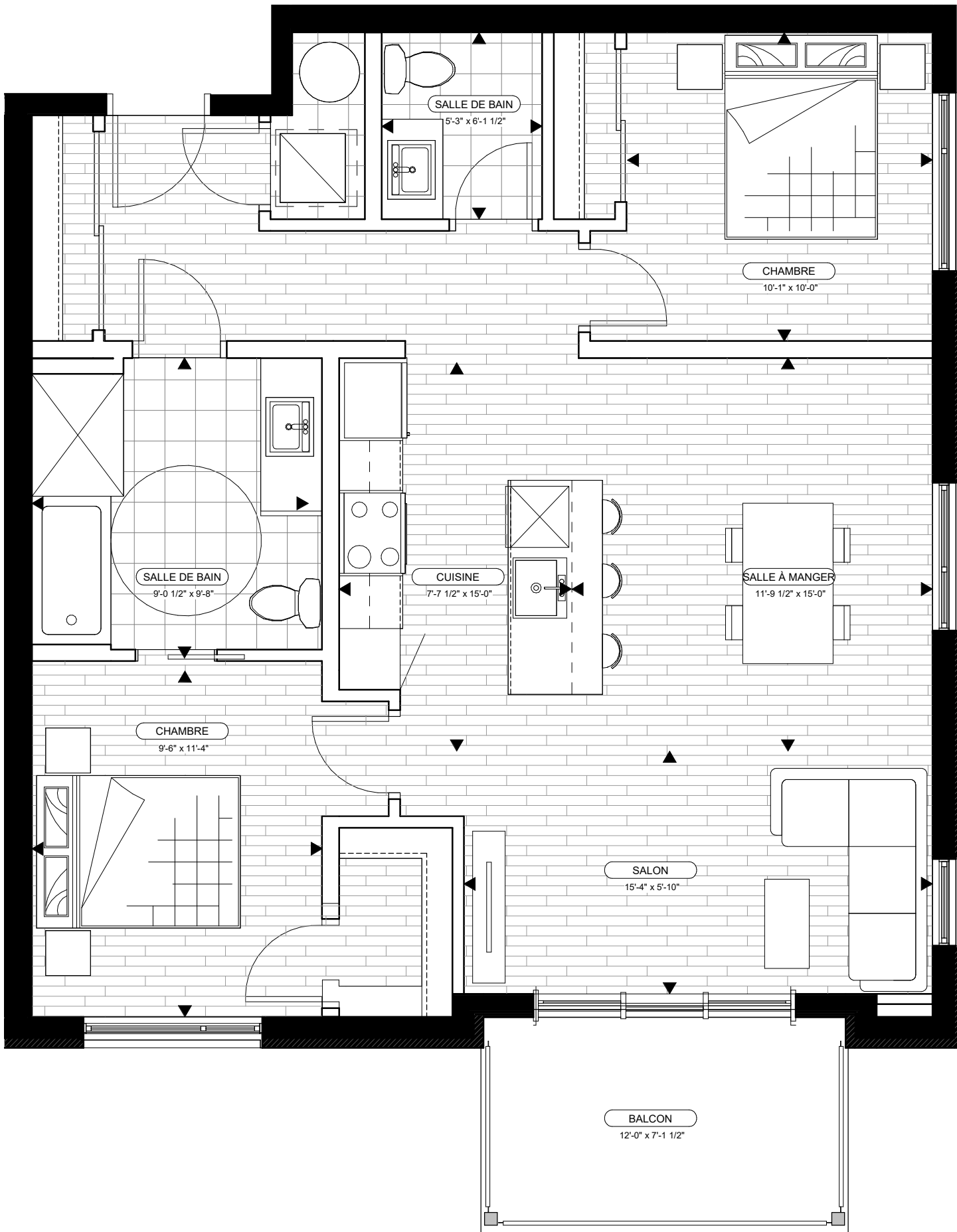
Balcony 8.2 m² / 88 ft²

NANCY-ELLIOTT - BÂTIMENT A
115 rue Nancy-Elliott
Gatineau, Québec J9J

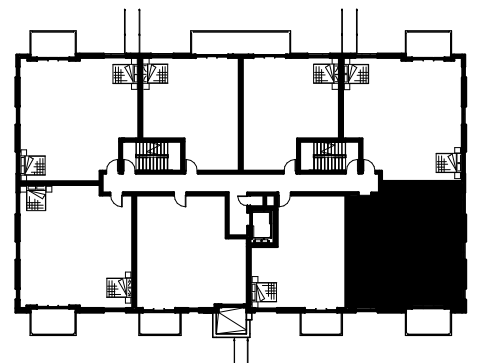


Type et modèle
Type and model

B3-R
2 CHAMBRES



Plan clé
Keyplan



Numéro d'appartements
Apartment Numbers

107-207-307-407

Superficie Totale

Total Area 100.9 m² / 1,086 ft²

Unité

Unit 92.8 m² / 999 ft²

Balcon

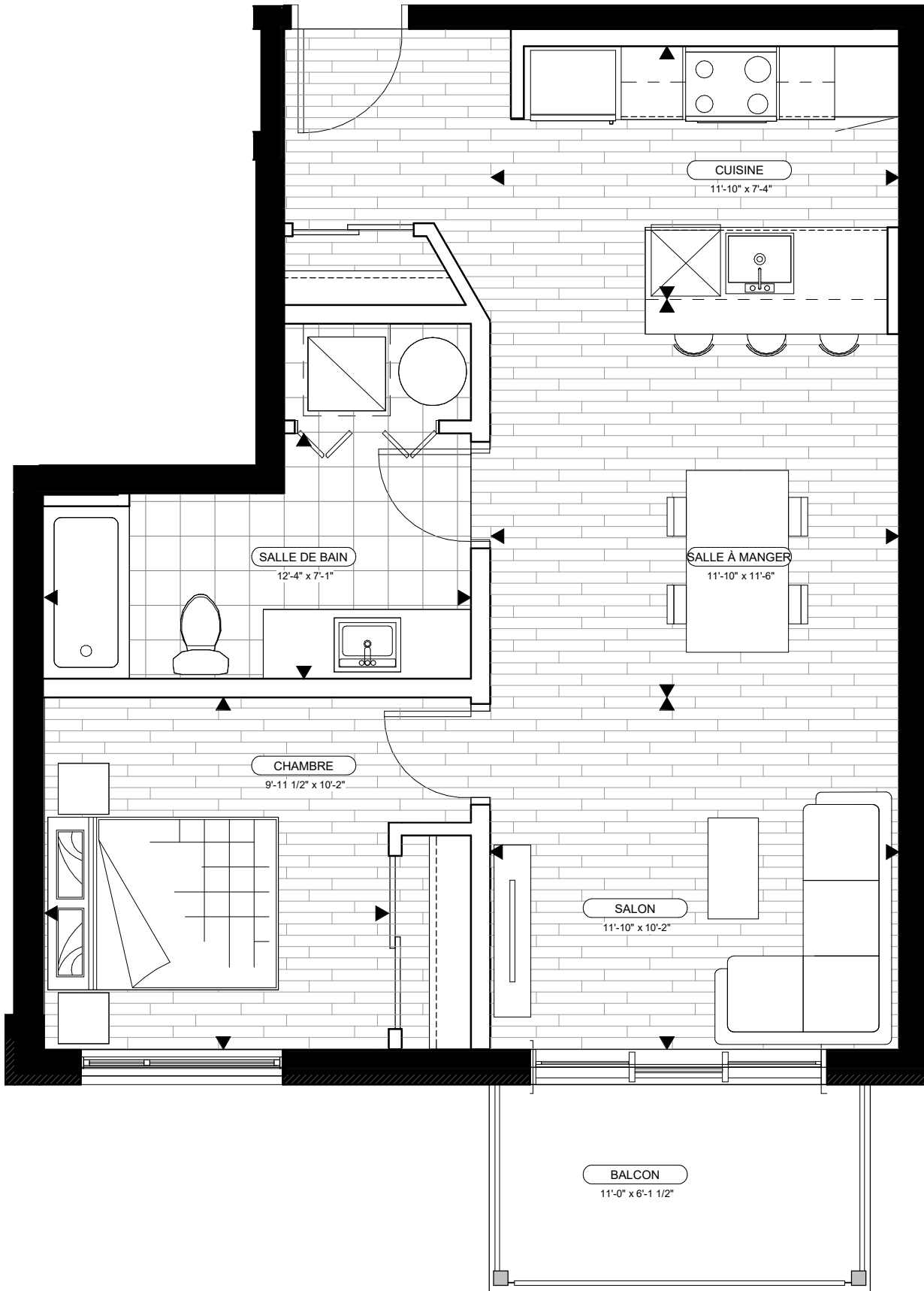
Balcony 8.1 m² / 87 ft²

NANCY-ELLIOTT - BÂTIMENT A
115 rue Nancy-Elliott
Gatineau, Québec J9J



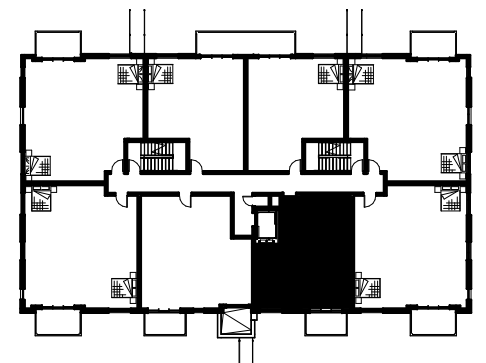
Type et modèle
Type and model

B1-R
2 CHAMBRES



Échelle / Scale
 1' 5' 10'

Plan clé
 Keyplan



Numéro d'appartements
 Apartment Numbers
 108-208-308-408

Superficie Totale
 Total Area 69.6 m² / 749 ft²

Unité
 Unit 63.4 m² / 682 ft²

Balcon
 Balcony 6.2 m² / 67 ft²

NANCY-ELLIOTT - BÂTIMENT A
 115 rue Nancy-Elliott
 Gatineau, Québec J9J



Type et modèle
 Type and model

A1
 1 CHAMBRE